



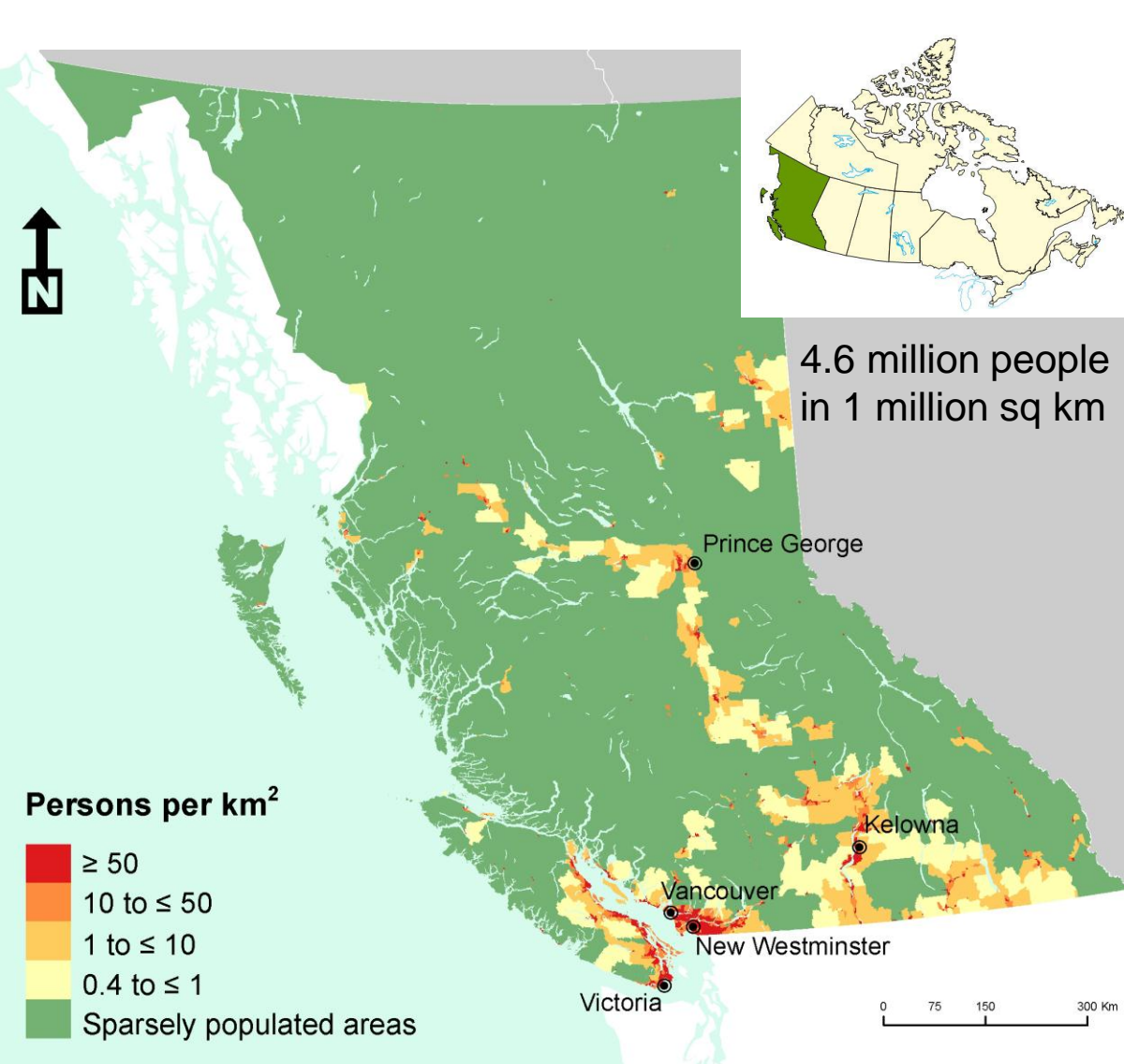
BC Centre for Disease Control
AN AGENCY OF THE BRITISH COLUMBIA HEALTH SERVICES AUTHORITY

Interferon gamma release assays: Increasing access by using a portable incubator

**Maureen Mayhew, Nash Dhalla, Karen
Beinhaker, Mohammad Morshed, Bridget Hall &
Victoria Cook**

British Columbia Centre for Disease Control,
Vancouver, British Columbia

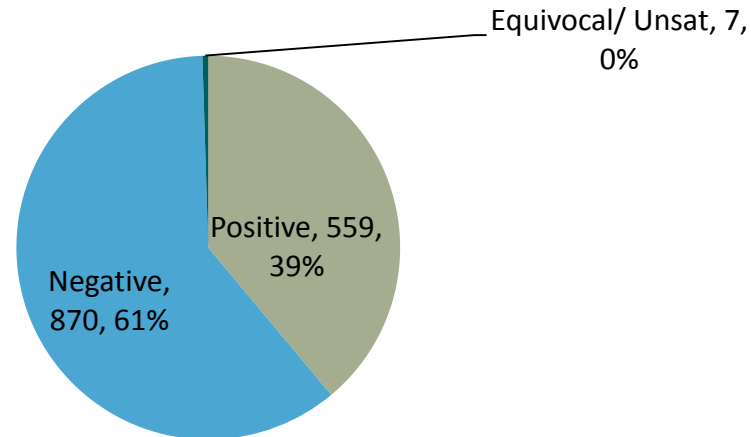
More equitable access to IGRA in BC



- Populations at risk for LTBI who face barriers to IGRA access e.g.
 - Far from IGRA site
 - Contacts
 - Exposed
 - Immune-compromised
 - Co-morbidities
 - Inmates
- Contributing factors
 - Blood draws in 5 cities
 - Not covered by insurance
 - Few people trained

Background – Quantiferon-gold

- Specificity in BCG vaccinated: TST (60%) & QFT (<90%)
- BC's experience using IGRA in TST positive patients (urban clinics)



- Quantiferon-gold & sample transportation to provincial lab

Process conducted	Accepted Time to lab	Temperature
No incubation or centrifugation	<16 hours	Room Temp
Incubation but no centrifugation	<3 days	2–27°C
Incubation & centrifugation	<4 weeks	2–8°C

Intervention

- Portable incubator (100 person)
- Detailed lab & transport protocols
- Selection of sites
 - >20 subjects TST+ BCG+; not treated
 - Accessible (road, air or water access)
 - Access to centrifuge (2000 rcf)
 - Nurse on site
 - Combined with site visit for other reason
- 2 TB nurses trained in blood collection, incubation, centrifuging & lab protocol



Findings & Conclusions

Findings

- Administrative delays so plan early
- 44 blood samples in 4 sites
 - No rejected samples

Conclusion

- Feasible method of expanding a program of targeted LTBI screening & treatment that provides an opportunity to educate

Future Directions

- Expansion to Federal prison system & other rural sites
- Cost?

